

COLOUR

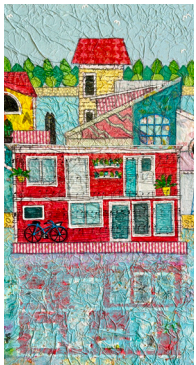
Amersham artist Nathalie Pymm tells us about printmaking, puppies and opening her studio for Bucks Art Weeks this June



& CRAFT



Art has always been woven into Nathalie's life. Growing up with an architect father and a freelance artist mother, she developed an early fascination with the built world – watching drawings transform into buildings sparked a lifelong appreciation for structure, detail and creativity.



Now based in Amersham, where she's lived for 30+ years, Nathalie is a self-taught printmaker and mixed media painter whose work celebrates the colour, texture and the beauty of everyday moments. Working across vibrant lino prints and richly layered paintings, she brings the same energy and curiosity to each piece.

Her creative career, however, wasn't always full-time. After more than three decades working as a nurse, a period of spinal surgery prompted a life shift that allowed her to fully embrace her artistic path. It's a transition she clearly relishes, spending her days in a

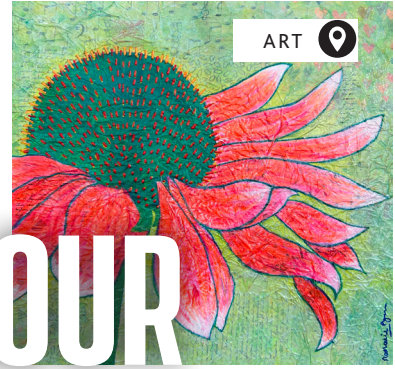
garden studio, now shared with her newest companion, Bella, a puppy in training as her "studio assistant." When she's not creating, Nathalie can often be found exploring the local countryside, walking from Amersham through woods towards Chesham and Old Amersham. Stops at favourite local cafés are part of the routine, with Bella warmly welcomed along the way.

Nathalie will once again open her studio as part of Bucks Art Weeks (6th to 14th June), alongside ceramicist and sculptor Caroline Selvey and jewellery designer Heidi Fenn. Visitors can expect a vibrant, immersive space, with artwork displayed from floor to ceiling and the chance to chat directly with the artists about their process and inspiration.

It follows a busy year that has seen Nathalie exhibit widely, including having her lino print Quintet in Red selected for the Royal Society of British Artists exhibition at the Mall Galleries. She has also shown work locally and continues to be an active part of the thriving Chilterns arts scene. Alongside her own practice, Nathalie co-organises Amersham Art Unlocked, a much-loved showcase of regional talent spanning painting, jewellery, ceramics and more. This year's event takes place on October 31st and November 1st.

For Nathalie, art is more than a profession – it's a form of connection, creativity and calm. "If I had one wish," she says, "it would be for everyone to find an art form they love."

● Find more info at nathaliepymm.com



ART

COLOUR

Amersham artist Nathalie Pymm tells us about printmaking, puppies and opening her studio for Bucks Art Weeks this June

Art has always been woven into Nathalie's life. Growing up with an architect father and a freelance artist mother, she developed an early fascination with the built world – watching drawings transform into buildings sparked a lifelong appreciation for structure, detail and creativity.

Now based in Amersham, where she's lived for 30+ years, Nathalie is a self-taught printmaker and mixed media painter whose work celebrates the colour, texture and the beauty of everyday moments. Working across vibrant lino prints and richly layered paintings, she brings the same energy and curiosity to each piece.

Her creative career, however, wasn't always full-time. After more than three decades working as a nurse, a period of spinal surgery prompted a life shift that allowed her to fully embrace her artistic path. It's a transition she clearly relishes, spending her days in a garden studio, now shared with her newest companion, Bella, a puppy in training as her "studio assistant." When she's not creating, Nathalie can often be found exploring the local countryside, walking from Amersham through woods towards Chesham and Old Amersham. Stops at favourite local cafés are part of the routine, with Bella warmly welcomed along the way.

Nathalie will once again open her studio as part of Bucks Art Weeks (6th to 14th June), alongside ceramicist and sculptor Caroline Selvey and jewellery designer Heidi Fenn. Visitors can expect a vibrant, immersive space,



& CRAFT



with artwork displayed from floor to ceiling and the chance to chat directly with the artists about their process and inspiration.

It follows a busy year that has seen Nathalie exhibit widely, including having her lino print Quintet in Red selected for the Royal Society of British Artists exhibition at the Mall Galleries. She has also shown work locally and continues to be an active part of the thriving Chilterns arts scene. Alongside her own practice, Nathalie co-organises Amersham Art Unlocked, a much-loved showcase of regional talent spanning painting, jewellery, ceramics and more. This year's event takes place on October 31st and November 1st.

For Nathalie, art is more than a profession – it's a form of connection, creativity and calm. "If I had one wish," she says, "it would be for everyone to find an art form they love."

- Find more info at nathaliepymm.com

